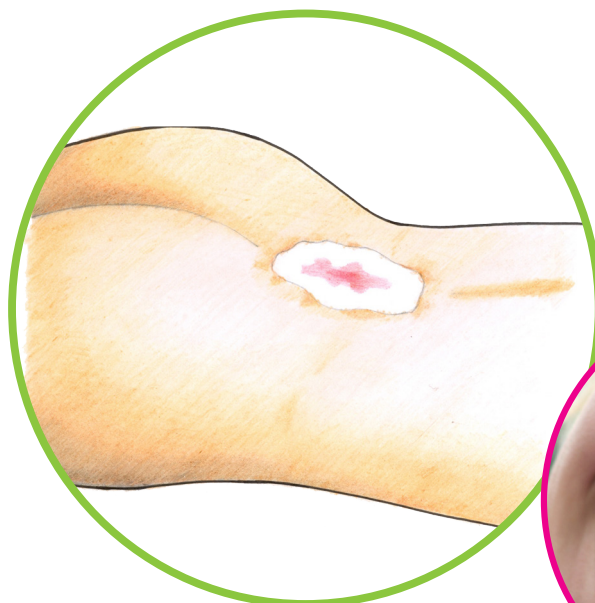


MOMOSAN®



WOUND CARE & DECUBITUS PROPHYLAXIS

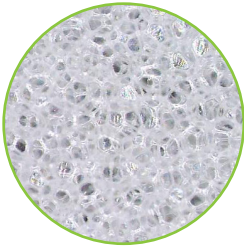


Supports reliable healing of

- chronic wounds
- decubitus ulcers
- venous ulcers
- burns, abrasions
- post-operative wound dressing

■ ideal as bedsore prevention

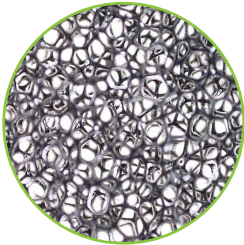
What is MOMOSAN® ...



15x increase in volume

- **MOMOSAN®-white**

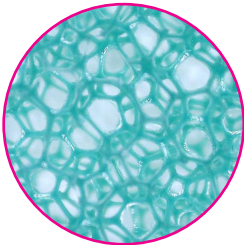
- Polyurethane foam with micro-tubule type structure which quickly absorbs exudate due to its special cell formation for secondary draining to promote a balanced wound environment.
- Excellent pressure prophylaxis for wounds of any origin for decubitus grade I-IV.
- Suitable as a wound cleaner for gentle, mechanical debridement.



15x increase in volume

- **MOMOSAN®-black**

- Polyurethane foam with a controlled 95% open cell structure and a „soft“ surface for use in negative pressure wound therapy (NPWT).
- Installation compatible (emulsions, solutions or suspensions of liquid medications)
- Suitable as a wound cleaner for mechanical debridement



15x increase in volume

- **MOMOSAN®-clima**

- Polyurethane foam with a 100% open, very sturdy cell structure for bedding without direct skin contact
- Excellent pressure-relieving cushioning effect without heat accumulation
- Optimal moisture control
- Effectively prevents maceration of the skin

Pharmaceutical forms of MOMOSAN® ...



MOMOSAN®-white and MOMOSAN®-black

- **Pads and tamponades made from polyurethane foam for modern wound care**
in various sizes from 6x2.5x0.3cm to 40x35x3cm
Standard sizes 10x10x1cm, 10x15x1cm, 10x15x2cm, 24x16x1cm, 24x16x2cm, 200x2.5x0.3cm...
any special sizes available, sold sterile and non-sterile, compatible with in-house sterilisation



MOMOSAN®-white and MOMOSAN®-clima

- **Cuts and braces made from polyurethane foam to protect the skin from pressure and damage**
in various sizes from 300x4x0.5cm to 59x49x4cm
Standard sizes: 59x49x1cm, 59x49x2cm, 300x5x0.3cm, 300x10x0.3cm...
all special sizes available, available non-sterile, compatible with in-house sterilisation



MOMOSAN®-white and MOMOSAN®-clima

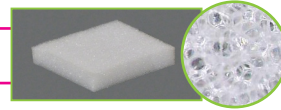
- **Sheets made from polyurethane foam as bedding and positioning aide**
in various sizes up to 200x100x4cm, all special sizes available, compatible with in-house sterilisation



Success in healthcare

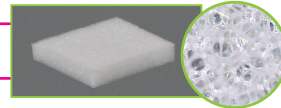
Wound care with MOMOSAN®-white

MOMOSAN®-white Description and Properties



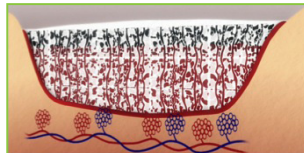
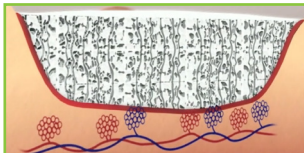
- Class IIb medical device · for treating chronic and infected wounds · Polyurethane foam medium cell open cell
- very high water vapour permeability · easy to use · contains no active ingredients · works through a special cell structure
- limited permeability to air · stimulates circulation · allergy-neutral · no cytotoxicity · does not stick to the wound
- optimal exudate removal · also absorbs exudate with pressure · promotes cell migration and neovascularization (blood vessels)
- wound-cleaning properties · cut to size · use as tamponade

MOMOSAN®-white effect

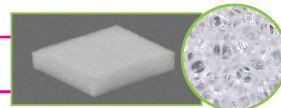


The effect is essentially based on 4 physical principles of the special cell structure

- Minimising contact pressure
- Microstimulation
- Absorbency
- Controlled suction



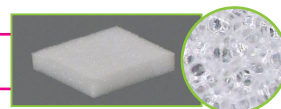
MOMOSAN®-white Application



- MOMOSAN®-white is inserted into the wound until it is completely filled or closed.
- Be sure MOMOSAN® is in contact with the entire wound, including the edges. Also fill any pockets.
- MOMOSAN®-white can be combined with any gel and medication approved for wound care.
- A secondary absorbing layer of MOMOSAN® is applied to ensure absorption of excess exudate.
- The microstimulation, caused by the involuntary body movement (muscle reflexes, etc.), creates a stimulus which promotes circulation.
- The microtubule type cell structure of MOMOSAN® white and the capillarity of fluids through surface tension ensure exudate is fully absorbed by MOMOSAN®.
- Stimulating the wound bed typically results in higher exudation with a cleaning effect. The wound rebuilds itself from the inside.

A generous cover balances the application pressure around the wound and promotes faster healing. Secure by e.g. nylon tights or fixation bandage.

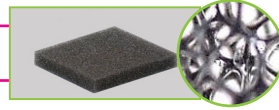
Summary of procedure



- Wounds of any origin
- As a tamponade for deep wounds (fistulas)
- Large-area application beyond the edge of the wound for surface wounds and ulceration (e.g. leg ulcers)
- Depending on the amount of exudate, combine with an absorbent secondary dressing - no secondary dressing required for little exudate
- For leg ulcers, MOMOSAN® may be combined with medical compression therapy
- Perfect for use with wound gels
- Clean with any wound irrigation solution
- Change dressing 2-3 times per week

Wound care with MOMOSAN®-black

MOMOSAN®-black inside the wound



Mechanical debridement as wound dressing

- Due to their special structure, the cut edges of the cell walls are perfectly suited for mechanical debridement.
- For this increased mechanical stimulus MOMOSAN® black may be used inside the wound.
- Once exudate forms, a layer of MOMOSAN® white may be applied on top to absorb exudate.
- Allows wound irrigation even with the wound filled (instill irrigation)

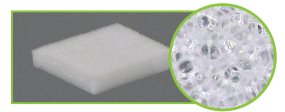
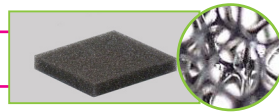


NEGATIVE PRESSURE WOUND THERAPY

- for severe wound exudation
- low cost alternative with the same effect

mechanical debridement with MOMOSAN® WoundCleaner™

MOMOSAN®-black & white for effective wound cleaning



- Mechanical wound cleaning with „WoundCleaner™“.
- Due to their special structure, the cut edges of the cell walls are perfectly suited for mechanical debridement.
- Painless removal of fixed coverings.
- Use the softer or the firmer sponge depending on the type of covering.
- Extremely low cost compared to other cleaning products.

MOMOSAN® WoundCleaner™ Methods of application - rough and detail cleaning



before



rough cleaning with
MOMOSAN® black



MOMOSAN® black
after rough cleaning



detailed cleaning with
MOMOSAN® white

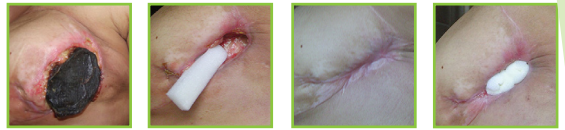


after

Case study 1 - multiple sclerosis stage 9.5



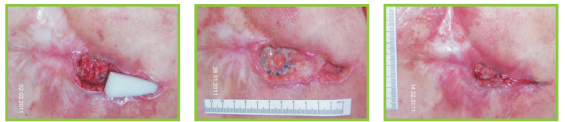
Case study 2 - Mastocarcinoma with mastectomy



Case study 3 - Right trochanter: Treatment with NPWT



Case study 4 - Fistula tract after incisional hernia surgery



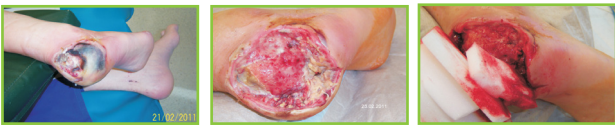
Case study 5 - Forefoot phlegmons due to polyneuropathy



Case study 6 - Forefoot phlegmons due to diabetes



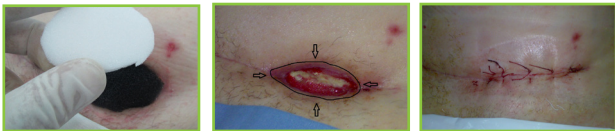
Case study 7 - Heel necrosis due to polyneuropathy



Case study 8 - Heel necrosis due to polyneuropathy



Case study 9 - Dehiscence of sutures



Case study 11 - Fascia due to erysipelas - septic



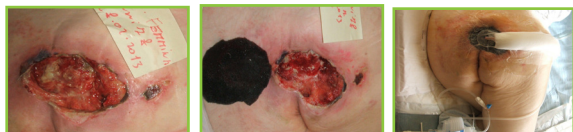
Case study 20 - peripheral arterial disease



Case study 21 - Diabetic foot syndrome



Case study 27 - Decubitus grade IV with NPWT



Special Issue Deutsches Ärzteblatt (German Medical Journal)



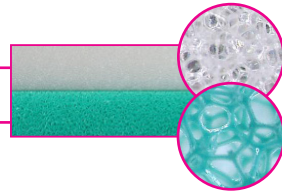
Poster Woundcleaner SAFW



For a detailed description and further case studies please visit: www.momosan.com ... and application videos: [YouTube](https://www.youtube.com)

Bedding and decubitus prophylaxis with MOMOSAN®

MOMOSAN® clima - MOMOSAN® white



- correct bedding as decubitus prophylaxis
- Preventing skin to skin contact
- Finger spreader - Heel wound cushion
- Patient bedding and restraint

The correct bedding is not only a prophylactic measure to treat decubitus, but rather it is preventive and accompanying support for treating an existing decubitus ulcer.



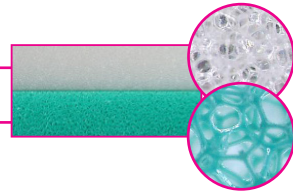
- MOMOSAN®-white in contact with the skin = microstimulation
- MOMOSAN®-clima as a pad = 100% moisture control = pressure distribution & reduction
- When bedding with MOMOSAN® the body parts which drop back whilst lying are cushioned perfectly, providing optional relief for prominent areas. **Optimal, pressure-reducing patient bedding**
- Whilst seated (wheel chairs, chair, etc.), if necessary cushion the body parts perfectly at the bottom, right / left side, back, providing relief for prominent areas. **Optimal, pressure-relieving patient bedding**



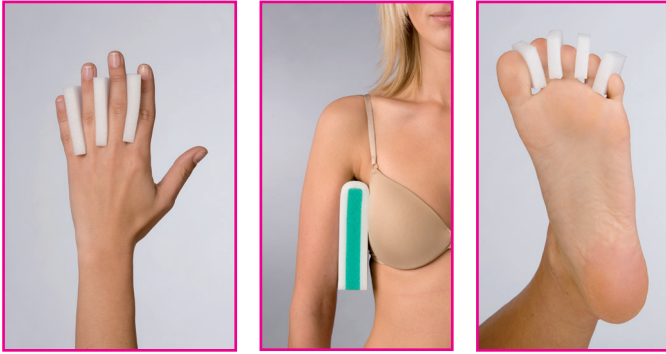
6 Success in healthcare

Bedding and decubitus prophylaxis with MOMOSAN®

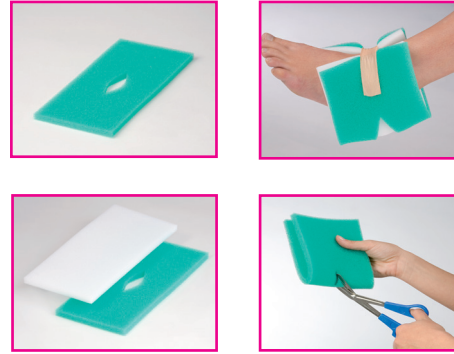
MOMOSAN® clima - MOMOSAN® white



Preventing skin to skin contact



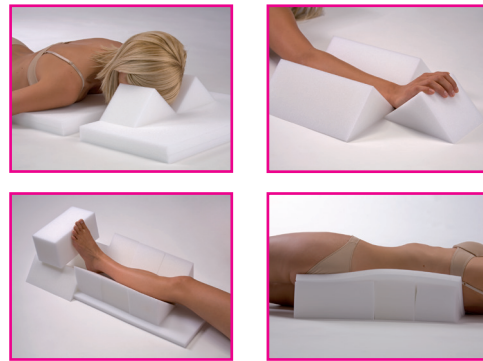
Heel wound „shoe“



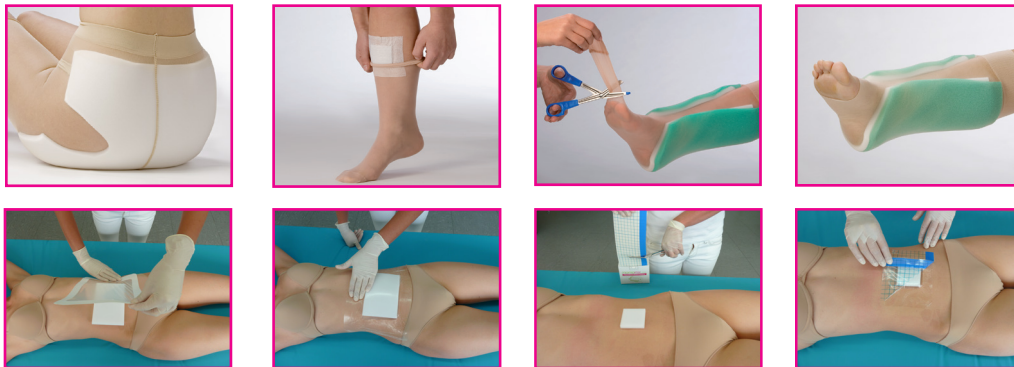
Finger spreader - contracture prophylaxis



Surgical bedding restraint during, before and after surgery



Secured to the wound - skin



wound care

mattress systems

fall- & protection systems

positioning aids

